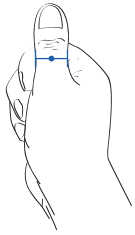


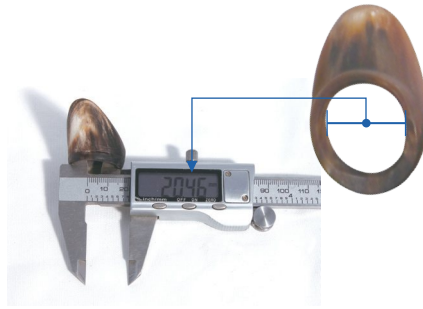
# BOW ACCESSORIES

## GENERAL STYLE THUMB RING | GAKJII HOW TO USE THE THUMB RING

When shooting arrow to easy use chin



Measure the diameter of your thumb.



The diameter is size of thumb ring.



The thumb ring is elliptical



The thumb is put through the thumb ring from the rounded side at a 90° angle to the thumb.



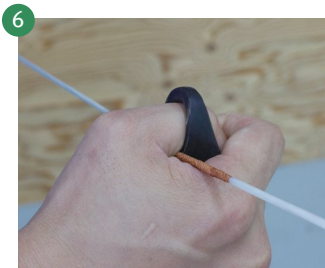
The ring is positioned just in back of the knuckle of the thumb.



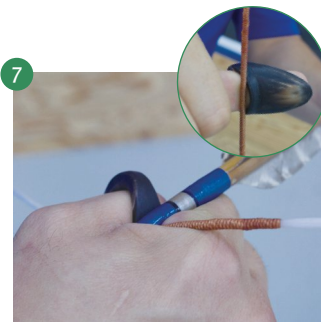
The ring is turned 90°, so that the ring protects the pad of the thumb.



The bow handle is held diagonally in the hand, with the fingers curling in back of the handle.



The string is positioned where the ring and thumb meet.



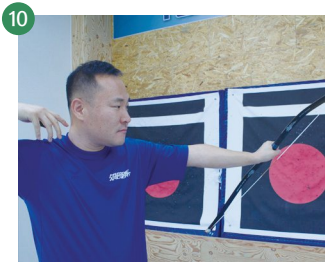
The index finger wraps around the thumb, similar to flipping a coin. The arrow rests just above the thumb and ring. The index finger will push the arrow into the bow, so the arrow will not fall off, even if the bow is canted upside down.



The bow is in position to be drawn and an initial sighting of the target is done.



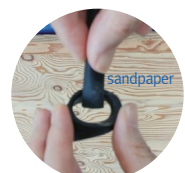
The string is drawn straight back until the back of its point touches the bow arm's thumb, with the bow arm straight and the draw arm's elbow parallel to the ground.



To release, the draw hand is simply relaxed. The bow should be held still until after the arrow has cleared the bow.



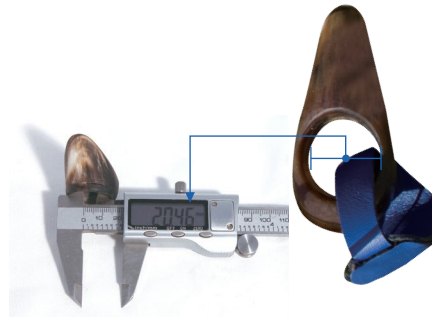
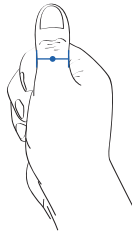
**Tip** | There has no 100% exact thumb ring on your thumb. We like to recommend you smaller size than your thumb. It is available to modify follow to your size with sandpaper.



# BOW ACCESSORIES

## MALE STYLE THUMB RING | SUGAKI HOW TO USE THE THUMB RING

It is more effective when using a strong elastic bow  
It make easy to size adjustment because leather pad



Measure the diameter of your thumb.

The diameter is size of thumb ring.



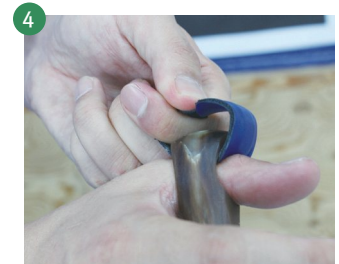
The thumb ring is elliptical



The thumb is put through the thumb ring from the rounded side at a 90° angle to the thumb.



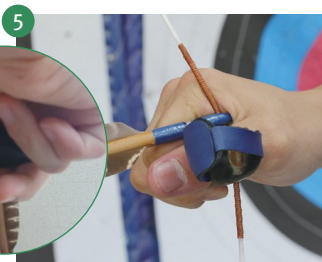
The ring is positioned just in back of the knuckle of the thumb.



The ring is turned 90°, so that the ring protects the pad of the thumb. Adjust the sizing used the leather pad.



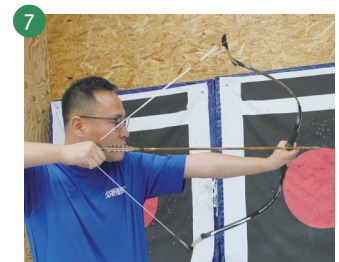
The string is positioned where the ring and thumb meet.



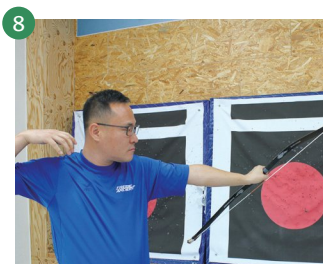
The index finger wraps around the thumb, similar to flipping a coin. The arrow rests just above the thumb and ring. The index finger will push the arrow into the bow, so the arrow will not fall off, even if the bow is canted upside down.



The bow is in position to be drawn and an initial sighting of the target is done.



The string is drawn straight back until the back of its point touches the bow arm's thumb, with the bow arm straight and the draw arm's elbow parallel to the ground.



To release, the draw hand is simply relaxed. The bow should be held still until after the arrow has cleared the bow.

**Tip** There has no 100% exact thumb ring on your thumb. We like to recommend you smaller size than your thumb. It is available to modify follow to your size with sandpaper.

